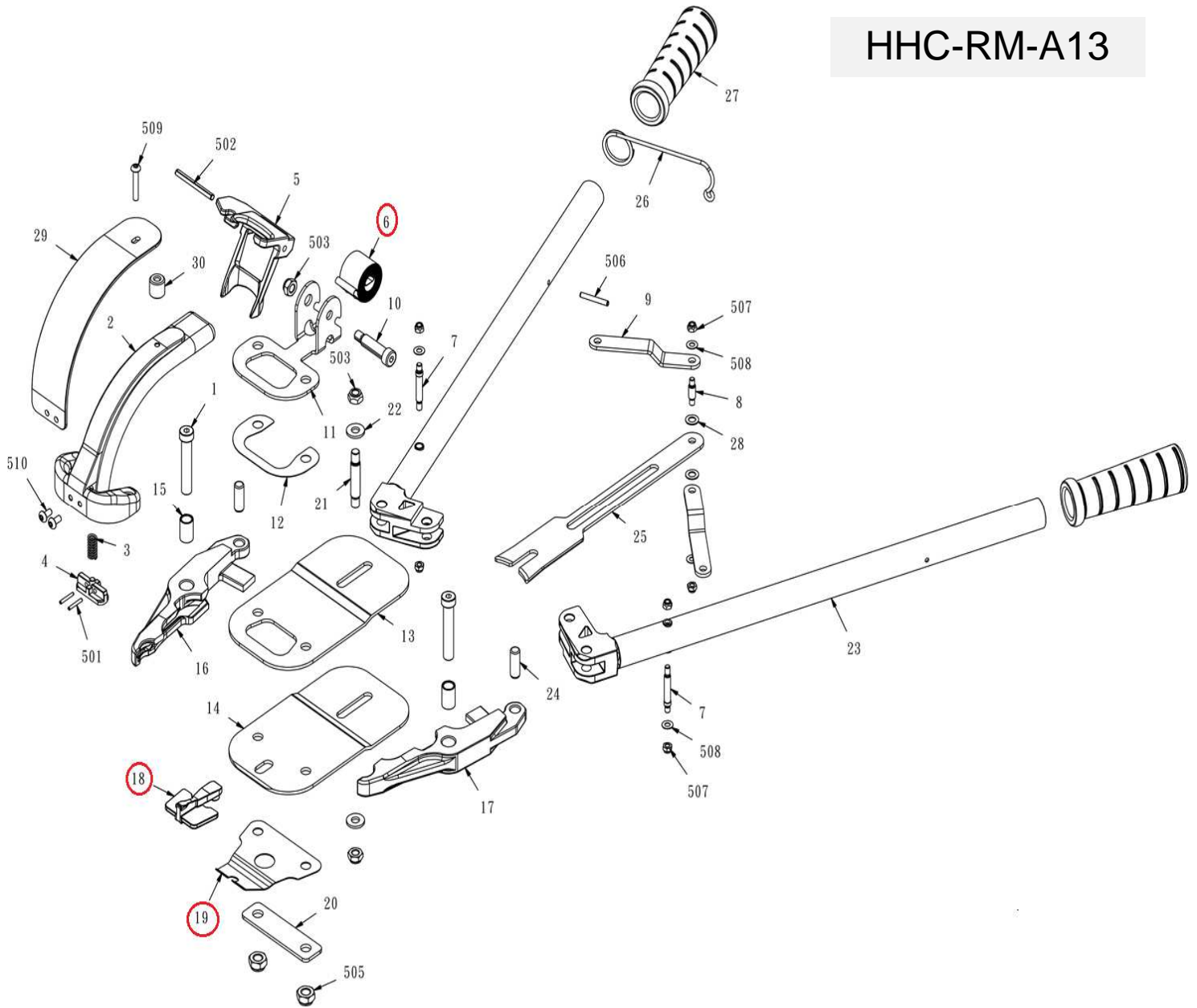


DESPIECE DE LA HERRAMIENTA

Usted encontrará con un círculo las piezas de desgaste recomendadas para mantener en stock.

HHC-RM-A13



006 Empujador

018 Latch

019 Spring latch

Kit: Un empujador (006), un latch (018) y un spring latch (019)

Propiedad de: Implementos Neumáticos SA de CV
Prohibida la reproducción parcial o total

LISTA DE PARTES
MODELO: HHC-RM-A13

CONFIDENCIAL

Item	Part No.	Description	Q'ty	Specification	P. Lista
1	A11802801	HEX.SOC.HD.BOLT	2		264.52
2	A13901102	MAGAZINE	1		5,004.83
3	A11802101	SPRING	1		22.14
4	A11802202	SHOE, MAGAZINE	1		967.17
5	A11802304	PUSHER	1		1,063.89
6	A11802502	SPRING	1		1,130.31
7	A13900502	ROD	2		170.13
8	A13901502	ROD	1		76.91
9	A13900102	LINK	2		121.19
10	A11802401	ROD	1		1,083.70
11	A11801701	BRACKET	1		495.24
12	A13901901	WASHER	1		59.43
13	A13900601	SIDE PLATE	1		19.13
14	A13900701	SIDE PLATE	1		19.13
15	A11800801	BUSHING	2		94.39
16	A13900902	JAW, UPPER	1		19.13
17	A13900802	JAW, LOWER	1		19.13
18	A11801804	LATCH	1		684.01
19	A11800302	SPRING, LATCH	1		19.13
20	A11800201	WASHER	1		369.39

Item	Part No.	Description	Q'ty	Specification	P. Lista
21	A13900201	ROD	1		19.13
22	A13901401	WASHER	2		19.13
23	A13900302A	HANDLE UNIT	2		19.13
24	A13900401	ROD	2		19.13
25	A13901202	DRIVER	1		2,745.38
26	A13901601	SPRING	1		19.13
27	A13901001	GLOVE	2		19.13
28	A13901801	WASHER	2		86.23
29	A11803701	COVER	1		19.13
30	A11803601	BUMPER	1		19.13
501	BAA025018	SPRING PIN	2	ψ2.5-18	19.13
502	BAA050050	SPRING PIN	1	ψ5-50	19.13
503	BAD01081	ANTI-LOOSE NUT	3	M8x1.25	19.13
505	BAD01101	ANTI-LOOSE NUT	2	M10x1.5	19.13
506	BAA040030	SPRING PIN	1	ψ4-30	19.13
507	BAD01051	LOCK NUT	6	M5	19.13
508	BAE03051	WASHER	4	ψ5.1x ψ12x 1T	19.13
509	BAC0905302	HEX.SOC.BUTOM HD.CAP SCREW	1	M5x0.8-30	19.13
510	BAC0905102	HEX.SOC.BUTOM HD.CAP SCREW	2	M5x0.8-10	19.13

* Precios en moneda nacional