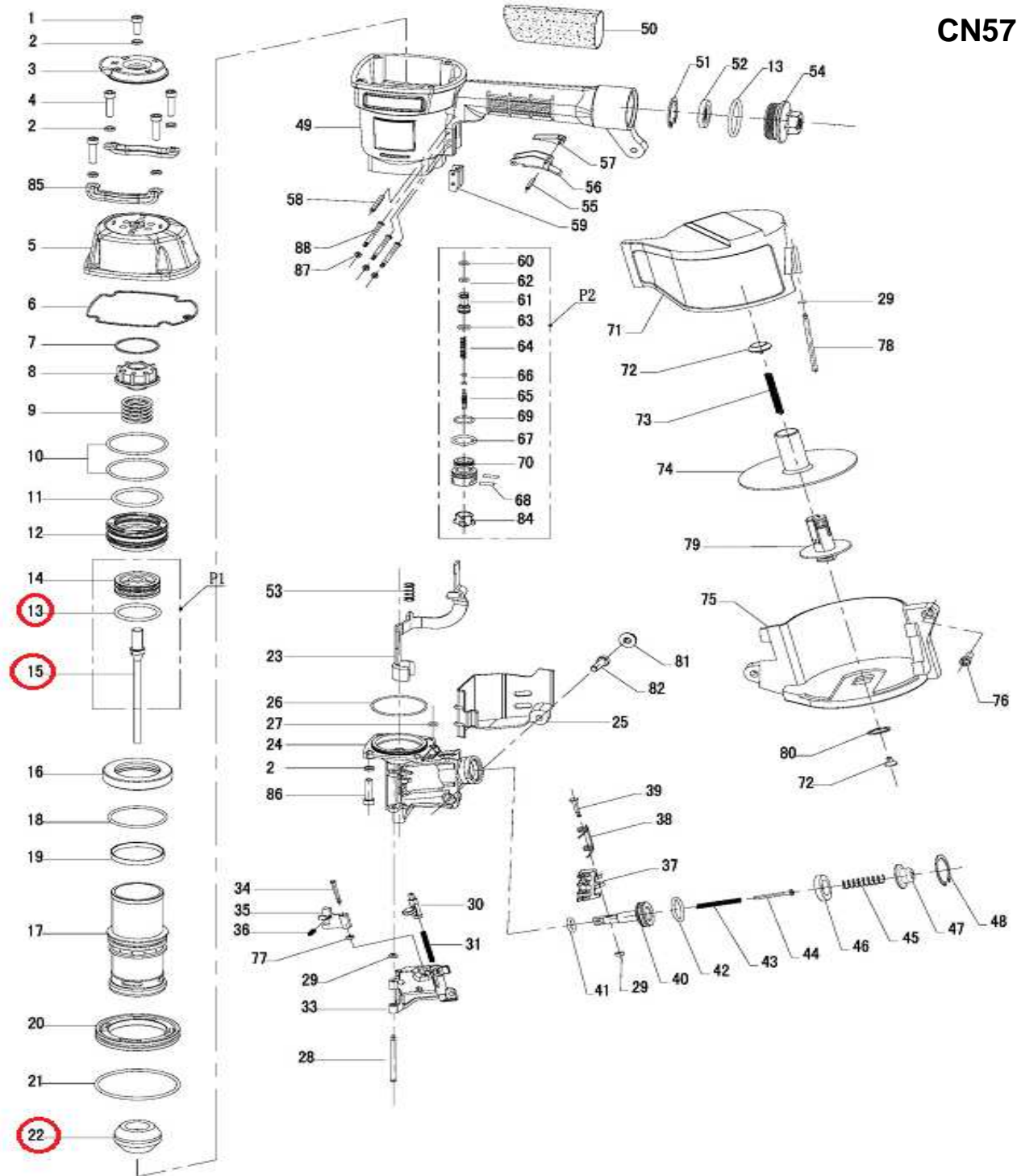


DESPIECE DE LA HERRAMIENTA

Usted encontrará con un círculo las piezas de desgaste recomendadas para mantener en stock.



022: Tope 015: Lanceta 013: O'ring

KIT: Un tope (022), una lanceta (015) y un O'ring (013)

Propiedad de: Implementos Neumáticos SA de CV
Prohibida la reproducción parcial o total

CONFIDENCIAL

Item	Part No.	Description	Q'ty	P. Lista
1	CN57-1	BOLT M6X20(Loctite)	1	19.49
2	CN57-2	SPRING WASHER 6	1	19.49
3	CN57-3	EXHAUST COVER	1	68.86
4	CN57-4	BOLT M6X25	1	19.49
5	CN57-5	CYLINDER CAP	1	692.17
6	CN57-6	GASKET	1	90.23
7	CN57-7	RING	1	19.49
8	CN57-8	PISTON STOP	1	207.77
9	CN57-9	COMPRESSION SPRING	1	27.31
10	CN57-10	O-RING 53X2.65	1	27.31
11	CN57-11	O-RING 41.2X3.55	1	27.31
12	CN57-12	HEAD VALVE PISTON	1	346.68
13	CN57-13	O-RING 37.5X3.55	1	66.49
14	CN57-14	PISTON	1	218.46
15	CN57-15	DRIVER BLADE	1	1,246.62
16	CN57-16	CYLINDER SEALING RING	1	68.86
17	CN57-17	CYLINDER	1	1,107.71
18	CN57-18	O-RING 50X2.65	1	27.31
19	CN57-19	CYLINDER SEAL	1	41.55
20	CN57-20	CYLINDER RING	1	138.91
21	CN57-21	O-RING 73X3.55	1	34.43
22	CN57-22	BUMPER	1	207.77
23	CN57-23	SAFETY	1	373.99
24	CN57-24	NOSE	1	2,354.33
25	CN57-25	GUARD COVER	1	62.92
26	CN57-26	O-RING 49.5X2	1	19.49
27	CN57-27	O-RING 4X1.5	1	19.49
28	CN57-28	DOOR PIN	1	21.37
29	CN57-29	PIN CAP (A)	1	19.49
30	CN57-30	LATCH	1	166.22
31	CN57-31	LATCH SPRING	1	19.49
32	CN57-32	ROLL PIN 3X12	1	19.49
33	CN57-33	DOOR	1	554.45
34	CN57-34	CHECK PAWL PIN	1	21.37
35	CN57-35	CHECK PAWL	1	166.22
36	CN57-36	CHECK PAWL SPRING	1	19.49
37	CN57-37	FEED PAWL	1	207.77
38	CN57-38	FEED SPRING	1	19.49
39	CN57-39	FEED PAWL PIN	1	24.93
40	CN57-40	FEED PISTON	1	166.22
41	CN57-41	O-RING 9.7X2.4	1	19.49
42	CN57-42	O-RING 20.8X2.4	1	19.49
43	CN57-43	FEED PISTON SPRING (B)	1	19.49
44	CN57-44	SPRING GUIDE	1	21.37
45	CN57-45	FEED PISTON SPRING (A)	1	21.37
46	CN57-46	FEED PISTON BUMPER	1	19.49
47	CN57-47	FEED PISTON CAP	1	19.49
48	CN57-48	SNAP RING 26	1	19.49

Item	Part No.	Description	Q'ty	P. Lista
49	CN57-49	BODY	1	19.49
50	CN57-50	HANDLE GRIP	1	117.54
51	CN57-51	SNAP RING 32	1	19.49
52	CN57-52	FILTER	1	27.31
53	CN57-53	SAFETY SPRING	1	21.37
54	CN57-54	END CAP	1	207.77
55	CN57-55	ROLL PIN 3X16	1	19.49
56	CN57-56	CONTACT PLATE	1	19.49
57	CN57-57	TRIGGER	1	55.80
58	CN57-58	ROLL PIN 3X30	1	19.49
59	CN57-59	SAFETY BRACKET	1	27.31
60	CN57-60	O-RING 5.8X1.9	1	19.49
61	CN57-61	TRIGGER VALVE BUSHING	1	68.86
62	CN57-62	O-RING 6.3X1.8	1	19.49
63	CN57-63	O-RING 8.6X1.9	1	19.49
64	CN57-64	TRIGGER VALVE SPRING	1	19.49
65	CN57-65	TRIGGER STEM	1	68.86
66	CN57-66	O-RING 2.5X1.4	1	19.49
67	CN57-67	O-RING 18.3X2.65	1	19.49
68	CN57-68	STRAIGHT PIN A3X15	1	19.49
69	CN57-69	O-RING 16X1.8	1	19.49
70	CN57-70	TRIGGER VALVE CAGE	1	48.68
71	CN57-71	MAGAZINE COVER	1	276.63
72	CN57-72	SPRING HOLDER	1	19.49
73	CN57-73	MAGAZINE SPRING	1	19.49
74	CN57-74	NAIL SUPPORT PLATE	1	99.73
75	CN57-75	MAGAZINE	1	415.54
76	CN57-76	BOLT M6X25	1	19.49
77	CN57-77	PIN CAP (B)	1	19.49
78	CN57-78	MAGAZINE PIN	1	21.37
79	CN57-79	MAGAZINE POST	1	55.80
80	CN57-80	SNAP RING	1	19.49
81	CN57-81	NUT M6	1	19.49
82	CN57-82	BOLT M6X32	1	19.49
84	CN57-84	TRIGGER VALVE CAP	1	34.43
85	CN57-85	SIDE PROTECTOR	1	55.80
86	CN57-86	BOLT M6X22 (Loctite)	1	19.49
87	CN57-87	STRAIGHT PIN CAP	1	19.49
88	CN57-88	STRAIGHT PIN	1	19.49
89	CN57-89	FLAT WASHER	1	19.49
90	CN57-90	ROLL PIN 3X16	1	19.49
91	CN57-91	SPRING SEAT	1	21.37
92	CN57-92	O-RING 9X2	1	19.49
93	CN57-93	WASHER	1	19.49
94	CN57-94	TRIGGER SLEEVE	1	19.49
P1	CN57-P1	DRIVER UNIT	1	1,531.56
P2	CN57-P2	TRIGGER VALVE	1	288.50

*Precios en moneda nacional