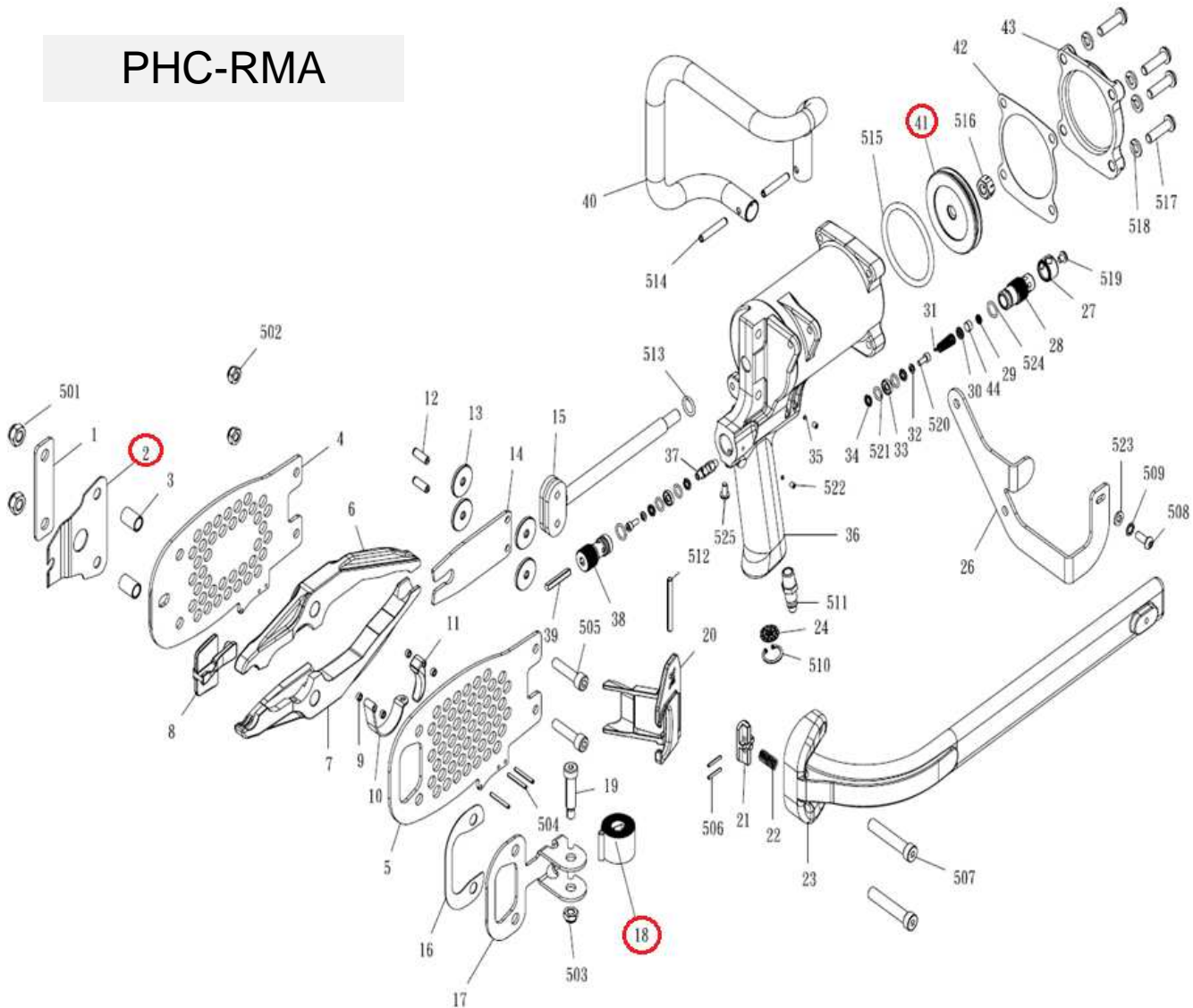


DESPIECE DE LA HERRAMIENTA

Usted encontrará con un círculo las piezas de desgaste recomendadas para mantener en stock.

PHC-RMA



002 Spring latch

018 Resorte empujador

041 Pistón

Kit: Un spring latch (02), Resorte empujador (018) y un Pistón (041)

Propiedad de: Implementos Neumáticos SA de CV
Prohibida la reproducción parcial o total

CONFIDENCIAL

LISTA DE PARTES
MODELO: PHC-RMA-13

Item	Part No.	Description	Q'ty	Specification	P. Lista
001	A11800201	WASHER	1		369.39
002	A11800301	SPRING, LATCH	1		219.07
003	A11800801	BUSHING	2		94.39
004	A11801202	SIDE PLATE	1		1,747.90
005	A11801101	SIDE PLATE	1		1,821.32
006	A11800501	JAW, UPPER	1		2,916.67
007	A11800401	JAW, LOWER	1		2,916.67
008	A11801801	LATCH	1		547.68
009	A11801501	TUBE	4		27.97
010	A08601201	GUARD, TRIGGER	1		74.58
011	A08603401	TRIGGER	1		389.20
012	A11801001	ROD	2		66.42
013	A11800901	ROLLER	4		237.72
014	A11800601	BLADE	1		727.13
015	A11801401	PISTON ROD	1		4,557.37
016	A11801901	WASHER	1		425.32
017	A11801701	BLACKET	1		495.24
018	A11802501	SPRING	1		632.74
019	A11802401	ROD	1		1,083.70
020	A11802301	PUSHER	1		1,063.89
021	A11802201	SHOE, MAGAZINE	1		341.42
022	A11802101	SPRING	1		22.14
023	A11802001	MAGAZINE	1		9,488.79
024	A06304901	SILENCER	1		50.11
025	A011803201	BUMPER	1		561.66
026	A11800101	FEEDER ARM	1		638.57
027	A08602701	DEFLECTOR	1		319.28
028	A08602601	SEAT, REAR VALVE	1		511.55
029	A08605201	SILENCER A	1		100.21
030	A08605301	SILENCER B	1		104.87
031	A08602501	SPRING	1		29.13
032	A08603701	WASHER	2		50.11
033	A08603301	SUPPORT, O-RING CENTER	2		67.59
034	A08603201	SUPPORT, O-RING END	4		53.60
035	A08605001	PLASTIC PIN	2		19.13
036	A11801301	BODY	1		15,564.51

Item	Part No.	Description	Q'ty	Specification	P. Lista
037	A08602801	SPACER	1		192.27
038	A08602901	SEAT, FRONT VALVE	1		600.11
039	A08603001	STEM, THROTTLE	1		55.93
040	A11801601A	HANDLE	1		3,495.81
041	A11800701	PISTON	1		836.66
042	A11802601	WASHER	1		196.93
043	A11802701	CAP	1		982.32
044	A08605401	SILENCER	1	1g	46.61
501	BAD02103	LOCK NUT	2	M10x1.5	24.47
502	BAD01081	LOCK NUT	2	M8x1.25	19.13
503	BAD02103	LOCK NUT	1	M10x1.5	24.47
504	BAA030026	SPRING PIN	3	φ3-26	19.13
505	BAC0408352	HEX. SOC. HD. BOLT	2	M8X1.25-35	19.13
506	BAA025018	SPRING PIN	2	φ2.5-18	19.13
507	A11802801	HEX. SOC. HD. BOLT	2	M10x1.5-53.5	264.52
508	BAC0906162	HEX. SOC. BUTTOM HD. CAP SCREW	1	M6x1-16	19.13
509	BAE07061	WHASER	1	□6	19.13
510	BAF22002	C-RING	1	□20	19.13
511	A00100801	AIR PLUG	1	Japanese Type	62.92
511	A00100802	AIR PLUG	1	U.S.A. Type	62.92
511	A00100803	AIR PLUG	1	EURO Type	62.92
512	BAA05050	SPRING PIN	1	□5-50	19.13
513	BAB024123	O-RING	1	φ2.4xφ12.3	19.13
514	BAA060036	SPRING PIN	2	□6-36	19.13
515	BAB053628	O-RING	1	φ5.34xφ62.87	186.44
516	A11802901	LOCK NUT	1	M10x1.5	170.13
517	BAC0908302	HEX. SOC. BUTTOM HD. CAP SCREW	4	M8x1.25-30	19.13
518	BAE01081	SPRING WASHER	4	φ8	19.13
519	BAC0905062	HEX. SOC. BUTTOM HD. CAP SCREW	1	M5x0.8-6	19.13
520	BAC0404102	HEX. SOC. HD. BOLT	2	M4X0.7-10	19.13
521	BAB017079	O-RING	4	φ1.78xφ7.94	19.13
522	BAC0304052	HEX. SOC. HDLESS. BOLT	2	M4x0.7-5	19.13
523	BAE04064	WASHER	1	□6*□16*1.5	19.13
524	BAB017108	O-RING	2	φ1.78xφ10.82	19.13
525	BAC0905102	HEX.SOC.BUTTOM HD.CAP SCREW	1	M5x0.8-10	19.13

* Precios en moneda nacional