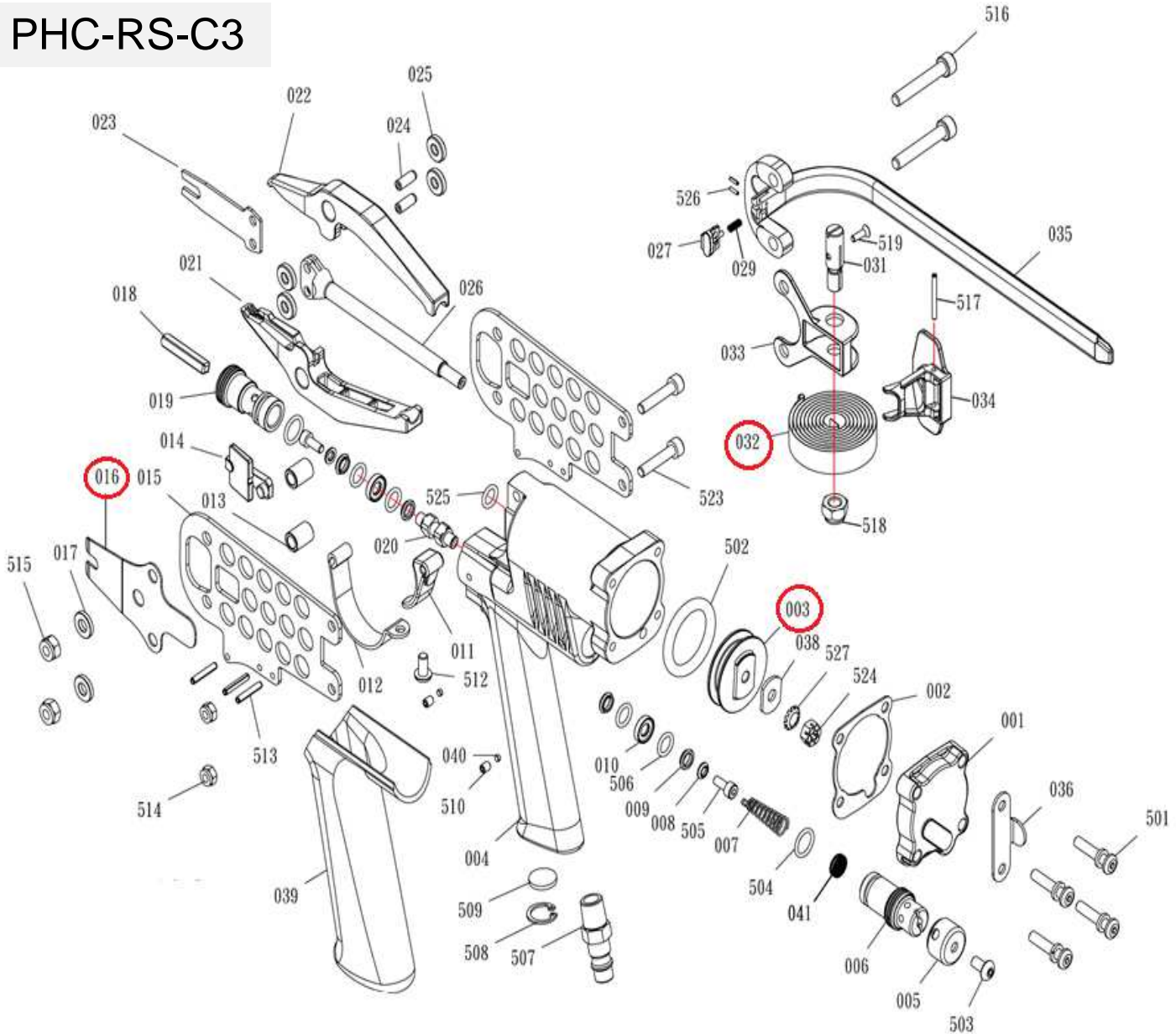


DESPIECE DE LA HERRAMIENTA

Usted encontrará con un círculo las piezas de desgaste recomendadas para mantener en stock.

PHC-RS-C3



032 Resorte

016 Spring Latch

003 Pistón

Kit: Resorte empujador (038), Spring Latch (016), Pistón (003)

Propiedad de: Implementos Neumáticos SA de CV
Prohibida la reproducción parcial o total

LISTA DE PARTES
MODELO: PHC-RS-C3-16

CONFIDENCIAL

Item	Part No.	Description	Q'ty	Specification	P. Lista
001	A08600102	CAP	1		570.98
002	A08600201	PACKING	1		76.91
003	A10601102	PISTON	1		530.20
004	A08600405	BODY UNIT	1		9,763.80
005	A08602701	DEFLECTOR	1		319.28
006	A08602603	SEAT, REAR VALVE	1		511.55
007	A08602502	SPRING	1		29.13
011	A08603402	TRIGGER	1		389.20
012	A08601201	GUARD, TRIGGER	1		74.58
013	A08601302	BUSHING	2		146.82
014	A10601201	LATCH	1		195.77
015	A08601002	SIDE PLATE	2		351.91
016	A09800503	SPRING, LATCH	1		104.87
017	A08603601	WASHER	2		19.13
019	A08602902	SEAT, FRONT VALVE	1		600.11
020	A08605701	SPACER	1		192.27
021	A10601601	JAW, LOWER	1	16.4/16.7mm(RSC3)	1,535.83
022	A10601701	JAW, UPPER	1	16.4/16.7mm(RSC3)	1,535.83
023	A10600203	BLADE	1	16.4/16.7mm(RSC3)	337.93
024	A08603801	PIN	2		87.40
025	A08603501	ROLLER	4		146.82
026	A08605101	PISTON ROD	1		2,939.98
027	A10600701	SHOE,MAGAZINE	1		236.55
029	A10600801	SPRING	1		19.13
031	A10400401	ROD	1		407.84
032	A10400501	SPRING	1		582.63
033	A10600301	BRACKET	1		370.56
034	A10600402	PUSHER	1		314.62
035	A10600601	MAGAZINE	1		2,796.65

Item	Part No.	Description	Q'ty	Specification	P. Lista
036	A10600101	BRACKET	1		45.45
038	A08604201	WASHER	1		19.13
039	A08604402	GRIP	1		257.52
041	A08605401	SILENCER	1	0.5g	46.61
042	A10500501	BUMPER	1		52.44
501	BAC2105252	HEX.SOC.BUTTOM HD. CAP SCREW	4	M5x0.8-25	19.13
502	BAB053279	O-RING	1	φ5.33xφ27.94	44.28
503	BAC0905062	HEX.SOC.BUTTOM HD. CAP SCREW	1	M5x0.8-6	19.13
504	BAB015130	O-RING	2	φ1.5xφ13	19.13
506	BAB017079	O-RING	4	φ1.78xφ7.94	19.13
507	A00100802	AIR PLUG	1	U.S.A. Type	62.92
508	BAF21602	C-RING	1	φ16	19.13
509	BAI1402	SILENCER	1	φ15.4x2mm	64.09
512	BAC0905102	HEX.SOC.BUTTOM HD. CAP SCREW	1	M5x0.8-10	19.13
513	BAA030018	SPRING PIN	3	φ3-18	19.13
514	BAD01051	LOCK NUT	2	M5	19.13
515	BAD01061	LOCK NUT	2	M6	19.13
516	A08604002	HEX.SOC.HD.BOLT	2	M6x1-37	88.56
517	BAA025024	SPRING PIN	1	φ2.5-24	19.13
518	BAD01081	LOCK NUT	1	M8x1.25	19.13
519	BAC0203102	HEX.SOC.FLAT COUNTER	1	M3x0.5-10	19.13
523	A08604101	HEX.SOC.HD.BOLT	2	M5x0.8-23.5	55.93
524	A08604501	LOCK NUT	1	M6X1	55.93
525	BAB019078	O-RING	1	φ1.9xφ7.8	19.13
526	BAA015006	SPRING PIN	1	φ1.5-6	19.13
527	BAE02062	Toothed lock washer-external	1	M6	19.13
528	BAB017076	O-RING	1	φ1.78xφ7.65	19.13
529	BAA030016	SPRING PIN	2	ψ3-16	19.13
530	BAF22002	C-RING	2	ψ20	19.13

* Precios en moneda nacional