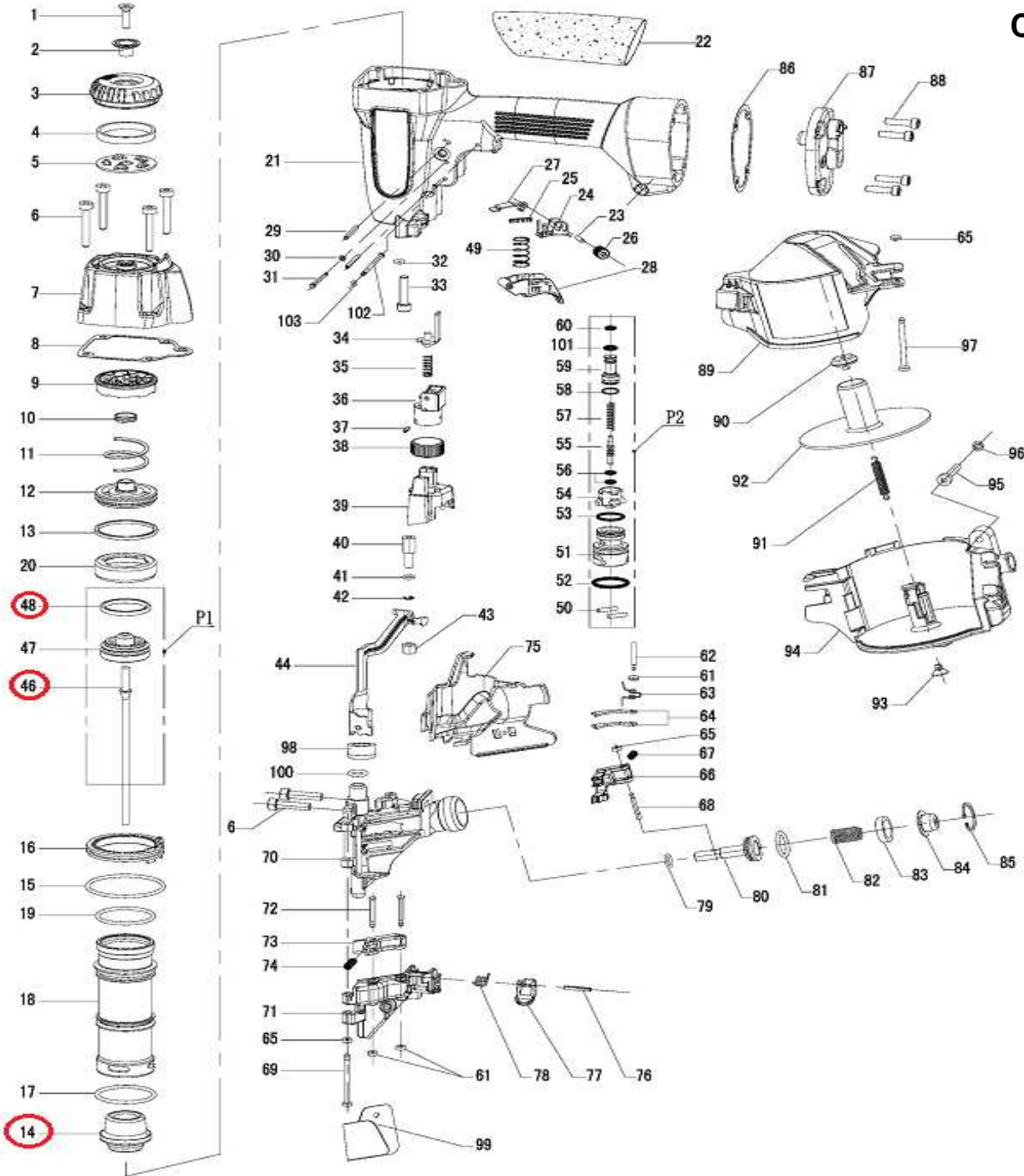


**DESPIECE DE LA HERRAMIENTA**

Usted encontrará con un círculo las piezas de desgaste recomendadas para mantener en stock.

**CN45**



014: Tope    046: Lanceta    048: O'ring

KIT: Un tope (014), una lanceta (046) y un O'ring (048)

Propiedad de: Implementos Neumáticos SA de CV

LISTA DE PARTES

CONFIDENCIAL

Prohibida la reproducción parcial o total

MODELO: CN45

Item	Part No.	Description	Q'ty	P. Lista
1	CN45-1	BOLT M6X20	1	19.49
2	CN45-2	BUSHING	1	51.05
3	CN45-3	EXHAUST COVER	1	161.47
4	CN45-4	EXHAUST FILTER (A)	1	48.68
5	CN45-5	EXHAUST FILTER (B)	1	28.49
6	CN45-6	BOLT M5X25	1	19.49
7	CN45-7	CYLINDER CAP	1	644.68
8	CN45-8	GASKET	1	104.48
9	CN45-9	BACK BUMPER	1	175.71
10	CN45-10	EXHAUST SEAL	1	46.30
11	CN45-11	COMPRESSION SPRING	1	32.06
12	CN45-12	HEAD VALVE PISTON	1	242.20
13	CN45-13	O-RING 40X2.65	1	32.06
14	CN45-14	BUMPER	1	161.47
15	CN45-15	O-RING 51.5X2.65	1	32.06
16	CN45-16	CYLINDER RING	1	161.47
17	CN45-17	O-RING 38.7X3.55	1	32.06
18	CN45-18	CYLINDER	1	1,047.16
19	CN45-19	O-RING 38.7X2.65	1	32.06
20	CN45-20	CYLINDER COLLAR	1	93.79
21	CN45-21	BODY	1	1,932.85
22	CN45-22	HANDLE GRIP	1	136.53
23	CN45-23	PIN	1	19.49
24	CN45-24	TRIGGER BRACKET	1	23.75
25	CN45-25	SPRING	1	19.49
26	CN45-26	ADJUSTER BUTTON	1	55.80
27	CN45-27	CONTACT PLATE	1	19.49
28	CN45-28	TRIGGER	1	23.75
29	CN45-29	ROLL PIN 3X30	1	19.49
30	CN45-30	PIN CAP	1	19.49
31	CN45-31	STEP PIN	1	21.37
32	CN45-32	O-RING 4X1.5	1	19.49
33	CN45-33	BOLT M6X22	1	19.49
34	CN45-34	SAFETY UPPER	1	40.37
35	CN45-35	SPRING	1	19.49
36	CN45-36	SAFETY UPPER GUIDE	1	72.42
37	CN45-37	ROLL PIN 2.5X10	1	19.49
38	CN45-38	ADJUSTER DIAL	1	23.75
39	CN45-39	SAFETY GUIDE	1	51.05
40	CN45-40	ADJUSTER	1	175.71
41	CN45-41	O-RING 5.15X1.8	1	19.49
42	CN45-42	SNAP RING	1	19.49
43	CN45-43	NUT	1	21.37
44	CN45-44	SAFETY	1	362.11
45	CN45-45	NOT APPLICABLE	1	19.49
46	CN45-46	DIRVER BLADE	1	1,368.91
47	CN45-47	PISTON	1	201.83
48	CN45-48	O-RING 30X3.55	1	32.06
49	CN45-49	SPRING	1	19.49
50	CN45-50	STRAIGHT PIN B3X15	1	19.49
51	CN45-51	TRIGGER VALVE CAGE	1	55.80
52	CN45-52	O-RING 18.3X2.65	1	19.49
53	CN45-53	O-RING 11.8x2.65	1	19.49

Item	Part No.	Description	Q'ty	P. Lista
54	CN45-54	TRIGGER VALVE CAP	1	50.11
55	CN45-55	TRIGGER STEM	1	80.73
56	CN45-56	O-RING 2.5X1.4	1	19.49
57	CN45-57	TRIGGER VALVE SPRING	1	19.49
58	CN45-58	O-RING 8.6X1.9	1	19.49
59	CN45-59	TRIGGER VALVE BUSHING	1	80.73
60	CN45-60	O-RING 5.8X1.9	1	19.49
61	CN45-61	PIN CAP (B)	1	19.49
62	CN45-62	STEP PIN	1	19.49
63	CN45-63	FEED SPRING	1	19.49
64	CN45-64	CHECK TOE	1	35.62
65	CN45-65	PIN CAP (A)	1	19.49
66	CN45-66	FEED PAWL	1	353.80
67	CN45-67	SPRING	1	19.49
68	CN45-68	FEED PAWL PIN	1	28.49
69	CN45-69	DOOR PIN	1	23.75
70	CN45-70	NOSE	1	2,167.93
71	CN45-71	DOOR	1	563.95
72	CN45-72	CHECK PAWL PIN	1	23.75
73	CN45-73	CHECK PAWL	1	193.52
74	CN45-74	CHECK PAWL SPRING	1	19.49
75	CN45-75	GUARD COVER	1	72.42
76	CN45-76	ROLL PIN 3X20	1	19.49
77	CN45-77	LATCH	1	161.47
78	CN45-78	LATCH SPRING	1	19.49
79	CN45-79	O-RING 9X1.8	1	19.49
80	CN45-80	FEED PISTON	1	193.52
81	CN45-81	O-RING 17X2.65	1	19.49
82	CN45-82	FEED PISTON SPRING	1	23.75
83	CN45-83	FEED PISTON BUMPER	1	19.49
84	CN45-84	FEED PISTON CAP	1	22.56
85	CN45-85	SNAP RING	1	19.49
86	CN45-86	END CAP SEAL	1	40.37
87	CN45-87	END CAP	1	242.20
88	CN45-88	BOLT M5X22	1	19.49
89	CN45-89	MAGAZINE COVER	1	321.75
90	CN45-90	SPRING HOLDER (A)	1	19.49
91	CN45-91	MAGAZINE SPRING	1	19.49
92	CN45-92	NAIL SUPPORT PLATE	1	153.16
93	CN45-93	SPRING HOLDER (B)	1	19.49
94	CN45-94	MAGAZINE	1	483.21
95	CN45-95	BOLT M5X35	1	19.49
96	CN45-96	NUT M5	1	19.49
97	CN45-97	MAGAZINE PIN	1	23.75
98	CN45-98	NOSE CAP	1	80.73
99	CN45-99	NOT APPLICABLE	1	19.49
100	CN45-100	O-RING 10X1.8	1	19.49
101	CN45-101	O-RING 6.3X1.8	1	19.49
102	CN45-102	STRAIGHT PIN	1	19.49
103	CN45-103	O-RING 1.3X1.8	1	19.49
P1	CN45-P1	DRIVER UNIT	1	1,602.80
P2	CN45-P2	TRIGGER VALVE	1	334.81

\*Precios en moneda nacional