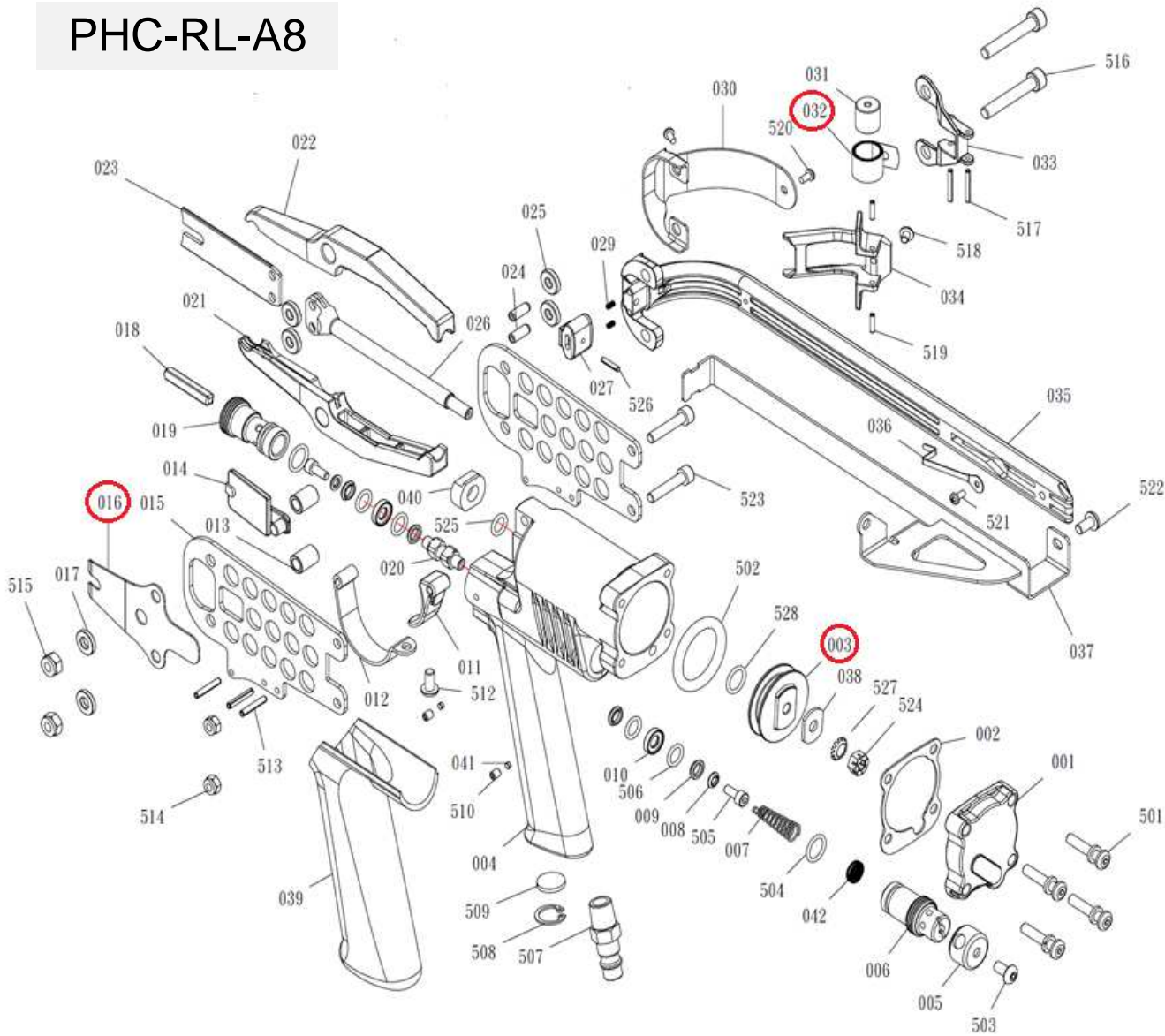


**DESPIECE DE LA HERRAMIENTA**

Usted encontrará con un círculo las piezas de desgaste recomendadas para mantener en stock.

**PHC-RL-A8**



**032 Resorte**

**016 Spring Latch**

**003 Pistón**

**Kit: Resorte empujador (038), Spring Latch (016), Pistón (003)**

Propiedad de: Implementos Neumáticos SA de CV  
Prohibida la reproducción parcial o total

CONFIDENCIAL

LISTA DE PARTES  
MODELO: PHC-RL

Item	Part No.	Description	Q'ty	Specification	P. Lista
001	A08600102	CAP	1		570.98
002	A08600201	PACKING	1		76.91
003	A10100801	PISTON	1	(N)RL	530.20
004	A08600402	BODY	1		9,763.80
005	A08602701	DEFLECTOR	1		319.28
006	A08602603	SEAT REAR VALVE	1		511.55
007	A08602502	SPRING	1		29.13
011	A08603402	TRIGGER	1		389.20
012	A08601201	GUARD TRIGGER	1		74.58
013	A08601302	BUSHING	2		146.82
014	A09500301	LATCH	1	(N)RL	207.42
015	A08601002	SIDE PLATE	2		351.91
016	A09500403	SPRING LATCH		(N)RL	104.87
017	A08603601	WASHER	2		19.13
019	A08602902	SEAT, FRONT VALVE	1		600.11
020	A08605701	SPACER	1		192.27
021	A10100101	JAW, LOWER	1	PHC-RL	1,570.78
021	A10100301	JAW, LOWER	1	RL-A8-16	1,570.78
022	A10100201	JAW, UPPER	1	PHC-RL	1,570.78
022	A10100401	JAW, UPPER	1	RL-A8-16	1,570.78
023	A09500501	BLADE	1	(N)RL-A8-15	339.09
023	A10100501	BLADE	1	(N)RL-A8-16	339.09
023	A10501201	BLADE	1	(N)RS-A5-16	248.20
024	A08603801	PIN	2		87.40
025	A08603501	ROLLER	4		146.82
026	A08600501	PISTON ROD	1	A8-15	2,939.98
026	A08605101	PISTON ROD	1	A8-16	2,939.98
027	A08601801	SHOE, MAGAZINE	1		236.55
029	A08603101	SPRING	2		19.13
030	A08602101	GUARD	1		220.24
031	A08602301	ROLLER	1		44.28
032	A08602202	SPRING	1		107.20
033	A08601701	BRACKET	1		319.28
034	A08601602	PUSHER	1		716.64

Item	Part No.	Description	Q'ty	Specification	P. Lista
035	A08602001@	MAGAZINE BODY	1		877.45
036	A08602401	CLIP	1		48.94
037	A08601401@	RAIL	1		725.96
038	A08604201	WASHER	1		19.13
039	A08604402	GRIP	1		257.52
040	A09500601	BUMPER	1	(N)RL	52.44
042	A08605401	SILENCER	1		46.61
501	BAC2105252	HEX. SOC. BUTTOM HD. CAP	4	M5x0.8-25	19.13
502	BAB053279	O-RING	1	ψ5.33 x ψ27.94	44.28
503	BAC0905062	HEX. SOC. BUTTOM HD. CAP	1	M5x0.8-10	19.13
504	BAB015130	O-RING	2	φ1.5xφ13	19.13
506	BAB017067	O-RING	4	ψ1.78x ψ7.94	19.13
507	A00100802	AIR PLUG	1		62.92
508	BAF21602	C-RING	1	ψ16	19.13
509	BAI1402	SILENCER	1	ψ15.4x2mm	64.09
512	BAC0905102	HEX.SOC.BUTTOM HD. CAP SCR	1	M5x0.8-10	19.13
513	BAA030018	SPRING PIN	3	ψ3-18	19.13
514	BAD01051	LOCK NUT	2	M5	19.13
515	BAD01061	LOCK NUT	2	M6	19.13
516	A08604002	HEX. SOC. HD. BOLT (Sust. al A0	2	M6x1-37	88.56
517	BAA025018	SPRING PIN	2	ψ2.5-18	19.13
518	BAC0904052	HEX.SOC.BUTTOM HD. CAP SCR	1	M4x.7-5	19.13
519	BAA025010	SPRING PIN	2	ψ2.5-10	19.13
520	BAC0903104	HEX.SOC.BUTTOM HD. CAP SCR	2	M3x..5-10	19.13
521	BAC0903064	HEX.SOC.BUTTOM HD. CAP SCR	1	M3x..5-6	19.13
523	A08604101	HEX. SOC. HD. BOLT	2	M5x..8-23.5	55.93
524	A08604501	LOCK NUT	1	M6x1	55.93
525	BAB019078	O-RING	1	ψ1.xψ7.8	19.13
526	BAA025012	SPRING PIN (Sust. al BAA025011)	1	ψ2.5-12	19.13
527	BAE02062	TOOTHED LOCK WASHER-EXTER	1	φ6.4	19.13
528	BAB017076	O-RING	1	φ1.78xφ7.65	19.13
529	BAA030016	SPRING PIN	2	ψ3-16	19.13
530	BAF22002	C-RING	2	ψ20	19.13